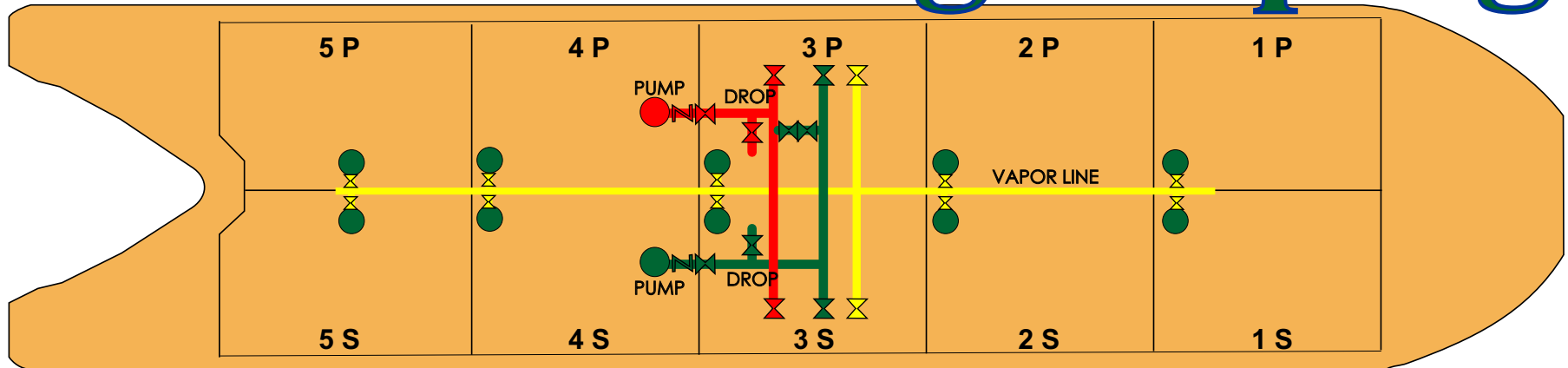


# DBL 104 Cargo Piping



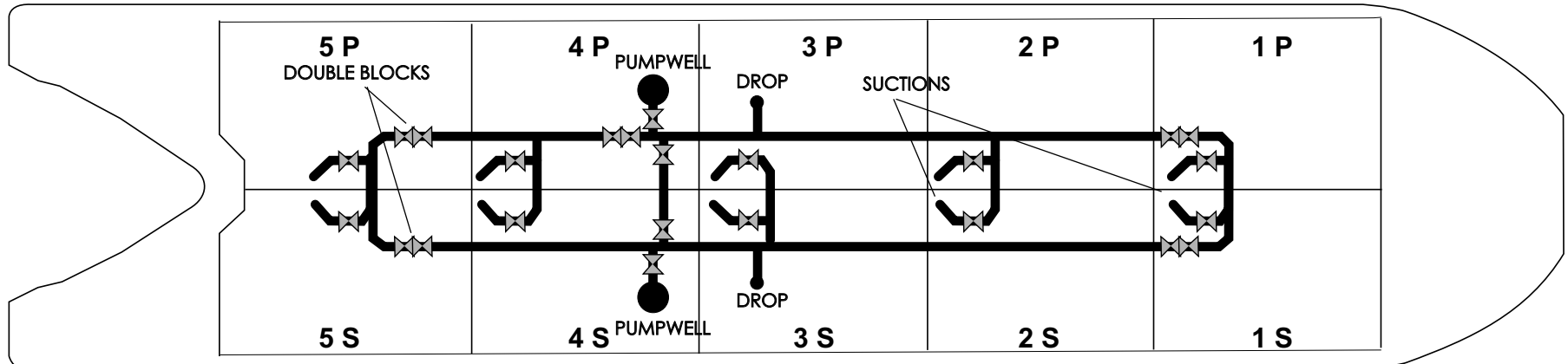
Above Deck Piping



399'11" X 74' X 25'  
 OPA 90 DOUBLE HULL BARGE  
 YEAR BUILT : 2007  
 OFFICIAL No.1193787  
 IMO #  
 GROSS TONS: 6,214  
 PUMPS - 2 DEEPWELLS

CAPACITY - 106,451 BARRELS  
 @ 100% (Approx)

1 PORT - 10,238	1 STARB - 10,238
2 PORT - 10,835	2 STARB - 10,835
3 PORT - 10,835	3 STARB - 10,835
4 PORT - 10,835	4 STARB - 10,835
5 PORT - 10,482	5 STARB - 10,482



Below Deck Piping