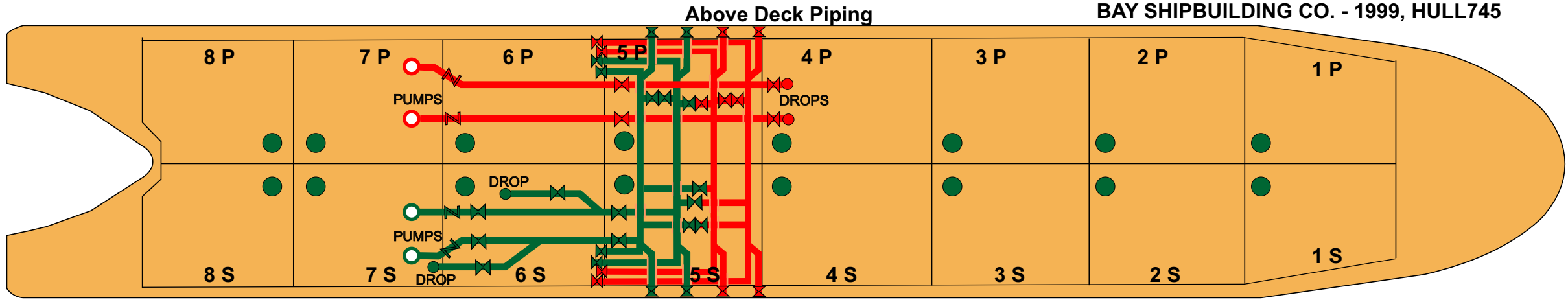
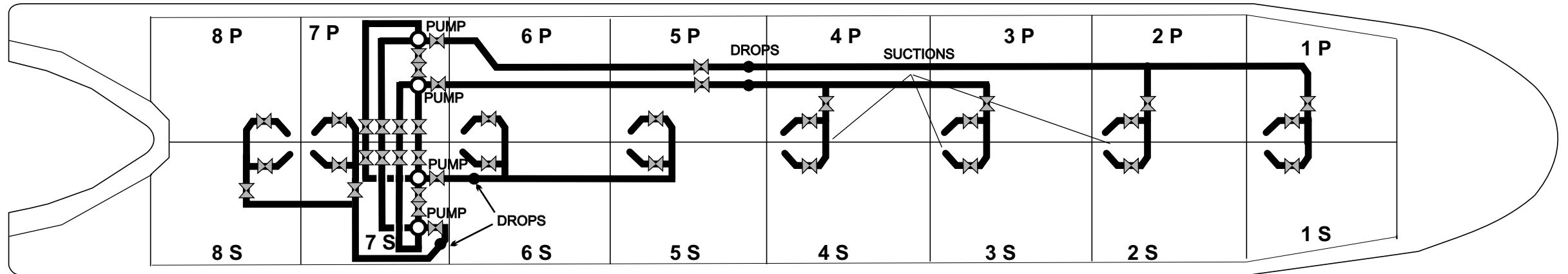


# DBL 140

Ex: S/R NEW YORK (Ex: SENECA)  
BAY SHIPBUILDING CO. - 1999, HULL745



504.5 'X 78' X 36.5'		CAPACITY - 143,068 BARRELS (100%)	
OPA 90 DOUBLE HULL BARGE		1 PORT - 7,889	1 STARB - 7,889
OFFICIAL No. 1090503		2 PORT - 8,633	2 STARB - 8,633
GROSS TONS: 9,038 GRT		3 PORT - 8,961	3 STARB - 8,961
GROSS TONS: 10,303 ITC		4 PORT - 8,961	4 STARB - 8,961
LOAD LINE DRAFT: 26' 9 1/2"		5 PORT - 8,961	5 STARB - 8,961
SUMMER DEADWEIGHT: 19,992 MT		6 PORT - 8,961	6 STARB - 8,961
LIGHTSHIP WEIGHT: 4879.60 LT		7 PORT - 8,953	7 STARB - 8,953
		8 PORT - 10,215	8 STARB - 10,215



Below Deck Piping