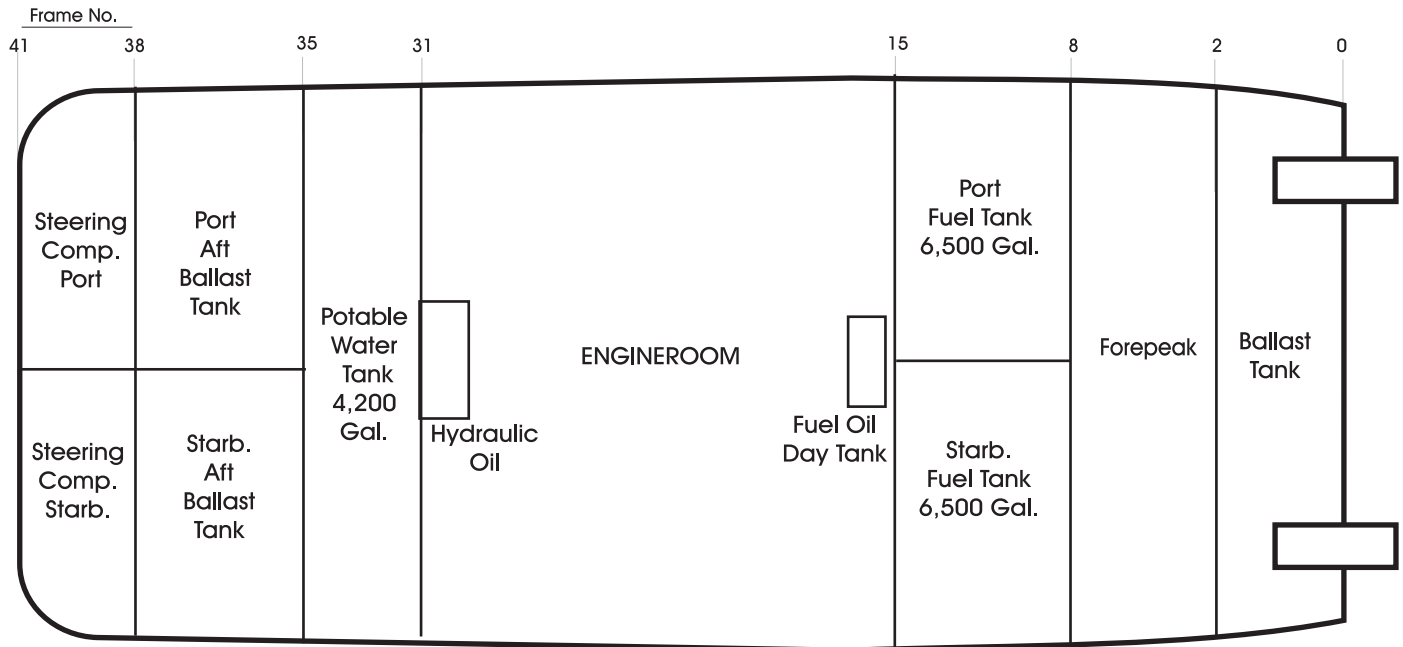


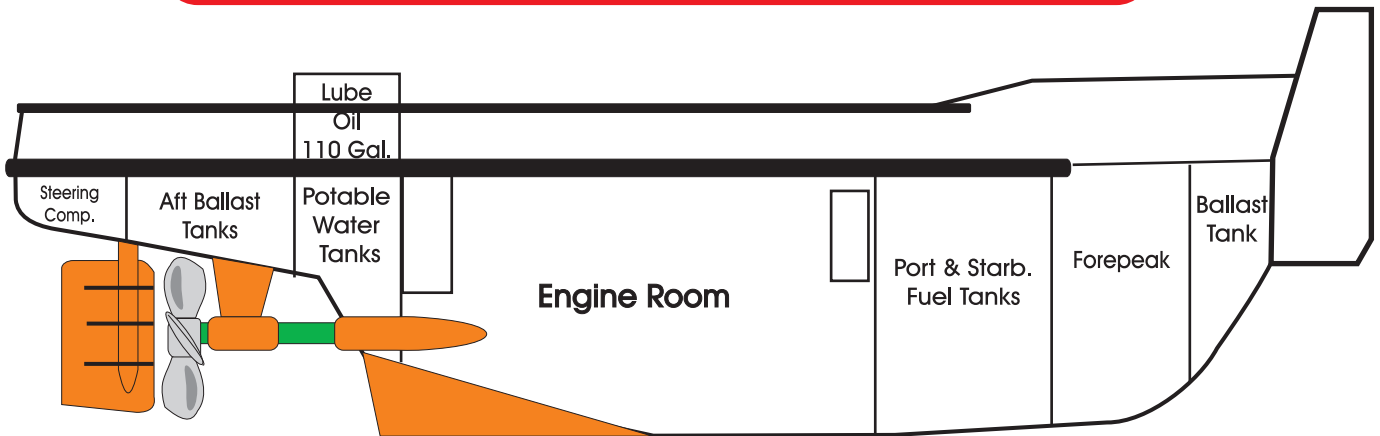
TANK/COMPARTMENT LOCATION



55.8' X 24.1' X 9.2'
TWIN SCREW TUG
BUILT 1981
OFFICIAL Number 634367
HULL Number 115
H.P. 900
IMO No. 8993758

CAPACITY SUMMARY

FUEL OIL.....13,000 Gals.
LUBE OIL.....110 Gals.
BALLAST.....
POT. WATER.....4,200 Gals.



K-SEA
K-Sea Transportation Inc.

SCOTIA SEA

EX: Ellen M.

Mattson
GRAPHICS 10/06